

# PATENT SPECIFICATION

705,389



Date of Application and filing Complete Specification Feb. 27, 1951.

No. 4708/51.

Application made in Germany on March 6, 1950.

Complete Specification Published March 10, 1954.

Index at acceptance:—Class 117, B3D(5: 6), B4.

## COMPLETE SPECIFICATION

### Improvements in or relating to Screening Frames

We, MIAO Vertriebsgesellschaft m.b.H. a German Company, of Braunschweig, Germany, do hereby declare the invention, for which we pray that a patent may be granted to us, and the method by which it is to be performed, to be particularly described in and by the following statement:—

This invention concerns a particular construction of a screening frame for use with sifting or screening machines of all kinds.

It has previously been customary to manufacture screening frames, in the main, from wood. Wood, as a material, however, has known disadvantages, which appear both in the manufacture as well as in the subsequent operation and use of the frame. These disadvantages are only partially compensated for by the relative ease with which wood may be worked.

According to the present invention a screening frame of rectilineal shape is characterised in that the frame consists of one or more members of light metal section having on one or more of the edges thereof grooves into which sealing inserts are placed, the frame being provided with integral projections on which linings, installations or extensions of wood are mounted.

The invention will be described further, by way of example, with reference to the accompanying drawings, in which:—

Fig. 1 is a plan view of a screening frame constructed according to the invention;

Fig. 2 is a cross section on the line E—F of Fig. 1; and

Fig. 3 is a cross section on the line G—H of Fig. 1.

The screening frame which is illustrated is for example assembled from longitudinal walls 1 and transverse walls 2. The walls 1 and 2 have in each case the same cross-sectional shape and are either parts of an extruded profile member cut to length, or for example,

individual parts cast in chill molds. They are easily manufactured so as to be usable without further treatment.

It is also possible to press the screening frame in one piece or to make it in one piece by any known process.

The drawing shows the screening frame designed for use with a plan sifter. For different installations or uses, however, the profile members, for example the longitudinal walls 1, are provided with projections 3 either for receiving inserts of wood or for enabling the various parts of the frame to be fastened together.

In plan sifter screening frames the transverse walls do not in general use any projections 3. The profile members employed for the transverse walls hence have smooth inner walls, as is shown, also for the end lengths of the side walls 1, in Fig. 3.

The upper and lower edges of the profile members or walls 1 and 2 are conveniently strengthened and are provided with grooves 4 for sealing inserts.

The screening frame consisting, in the manner described above, of extruded, cast or pressed profile members is also cheap to produce when a subsequent mechanical treatment is necessary for certain purposes. The cost of this treatment is so small, taking into consideration the ready availability of extruded, pressed or cast profile members that the cost of production is thereby hardly increased, and in any case is less than the cost of manufacturing screening frames in wood.

What we claim is:—

1. A closed screening frame of rectilineal shape characterised in that the frame consists of one or more members of light metal section having on one or more of the edges thereof grooves into which sealing inserts are placed, the frame being provided with integral projections on which linings, installations or extensions of wood are mounted.

2. A screening frame constructed and

705,389

arranged substantially as described with reference to and as illustrated in the accompanying drawings.

W. P. THOMPSON & CO.  
12, Church Street, Liverpool, 1.  
Chartered Patent Agents.

Leamington Spa: Printed for Her Majesty's Stationery Office, by the Courier Press.—1954.  
Published at The Patent Office, 25, Southampton Buildings, London, W.C.2, from which copies may be obtained.

BEST AVAILABLE COPY

FIG. 1

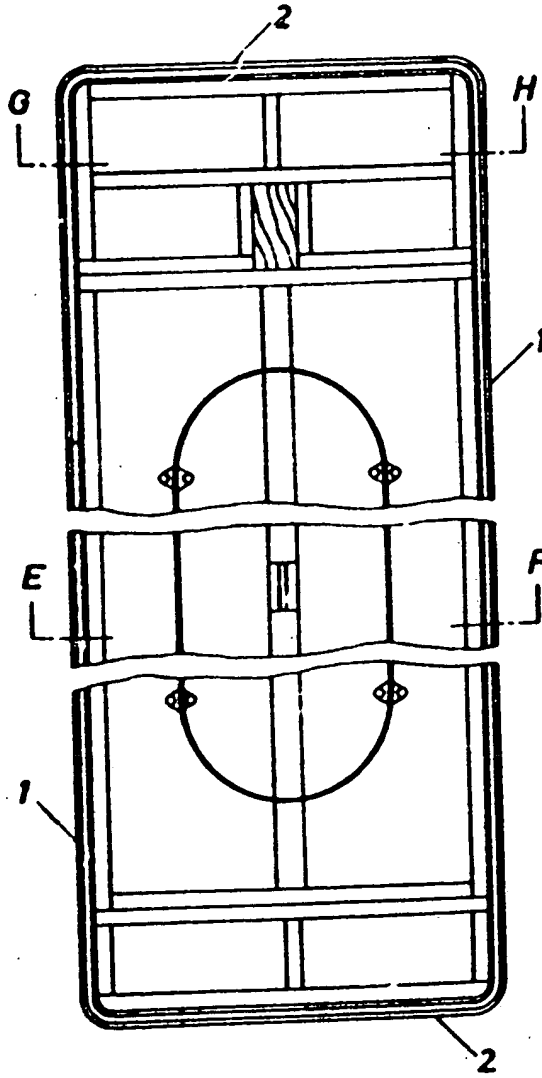


FIG. 2

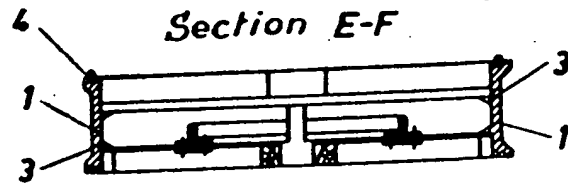


FIG. 3

